

Centro 3

Assembly Instructions

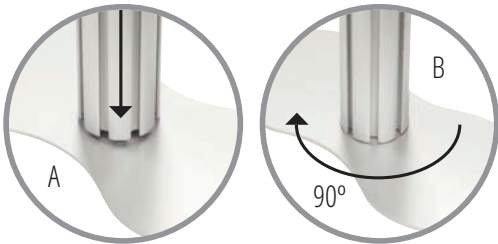


With Spacer Bars

1

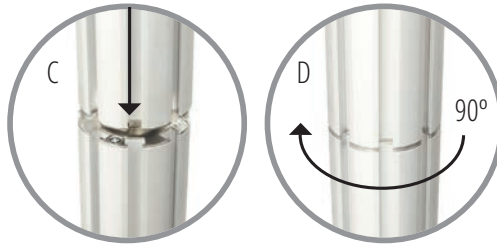


Place base plates on the floor, position lower posts centrally over male fitting of base plate (A), and rotate until assembly drops into position, continue rotating clockwise through 90° to secure (B).



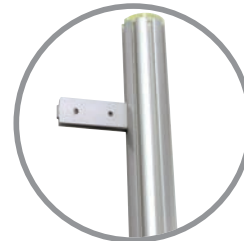
2

Affix upper posts to lower posts by positioning female end centrally over male fitting (C), and rotate until assembly drops into position, continue rotating clockwise through 90° to secure (D).

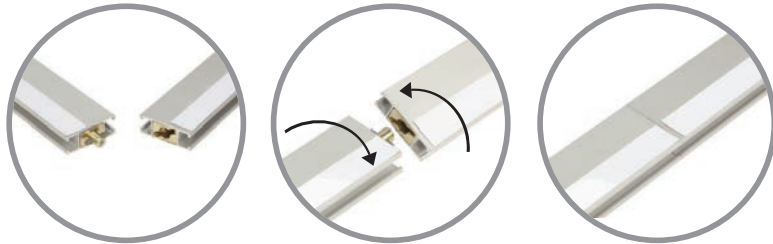


3

Slot clamp of spacer bars into channel of posts at 90° to base plate. Position spacer bars approximately 150mm from top and bottom of assembled posts and tighten grub screw to secure.



- 4 Align steel fixing strips of 950mm vertical profiles, slot and twist together to join. With steel fixing strip lowermost, carefully lay one 750mm horizontal profile on floor between each post assembly.



5



Ensuring the single steel strip of first vertical rail is adjacent to post, slot clamps of spacer bars into channel. Raise/lower vertical rail until the bottom clamp is aligned to top of horizontal profiles on the floor. Tighten grub screws of spacer bars to secure and repeat for remaining vertical rails.

6



Affix bottom horizontals flush to outer edge of vertical rails.

7



With steel fixing strip uppermost, slot final 750mm horizontal profiles onto top of vertical rails. Tighten remaining grub screws to finish assembly of the framework.

8



Starting from the top left-hand side of the system, unroll the first graphic panel and align the magnetic tape with the steel fixing strips of the framework. Work across the frame, taking care not to crease the graphic panel. Repeat for remaining graphic panels to complete assembly.

Centro 3 with spacer bars complete

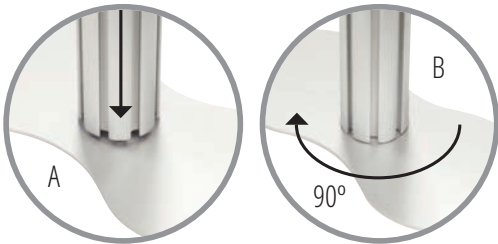


Without Spacer Bars

1

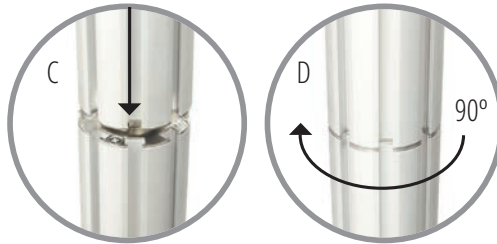


Place base plates on the floor, position lower posts centrally over male fitting of base plate (A), and rotate until assembly drops into position, continue rotating clockwise through 90° to secure (B).



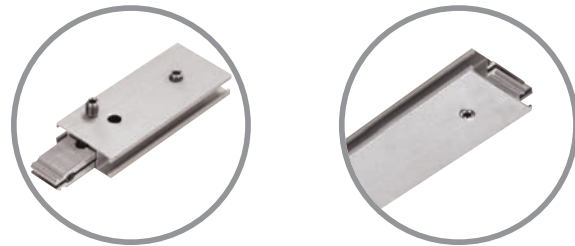
2

Affix upper posts to lower posts by positioning female end centrally over male fitting (C), and rotate until assembly drops into position, continue rotating clockwise through 90° to secure (D).

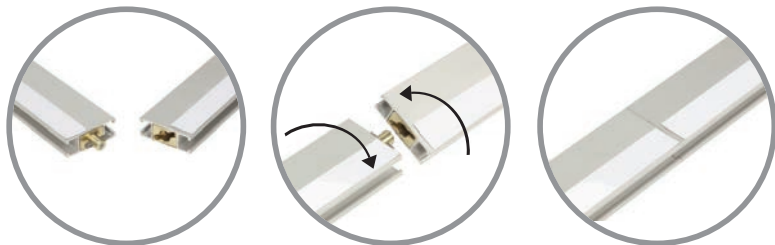


3

Remove one internal clamp from each spacer bar by removing grub screw and sliding out. Reinsert clamps into ends of all 750mm horizontal profiles.



- 4 Align steel fixing strips of 950mm vertical profiles, slot and twist together to join. With steel fixing strip lowermost, carefully lay one 750mm horizontal profile on base plates between each post assembly.



5



Slot clamps of each bottom horizontal profile into post channels and tighten grub screws with hex key supplied to secure.

6



Ensuring the single steel strip of first vertical rail is adjacent to post, slot clamp into channel of horizontal at the corner. Tighten grub screw to secure and repeat for remaining vertical rails.

7



With steel fixing strip uppermost, slot final 750mm horizontal profiles onto top of vertical rails and channels of posts. Tighten remaining grub screws to finish assembly of the framework.

8



Starting from the top left-hand side of the system, unroll the first graphic panel and align the magnetic tape with the steel fixing strips of the framework. Work across the frame, taking care not to crease the graphic panel. Repeat for remaining graphic panels to complete assembly.

Centro 3 without spacer bars complete



