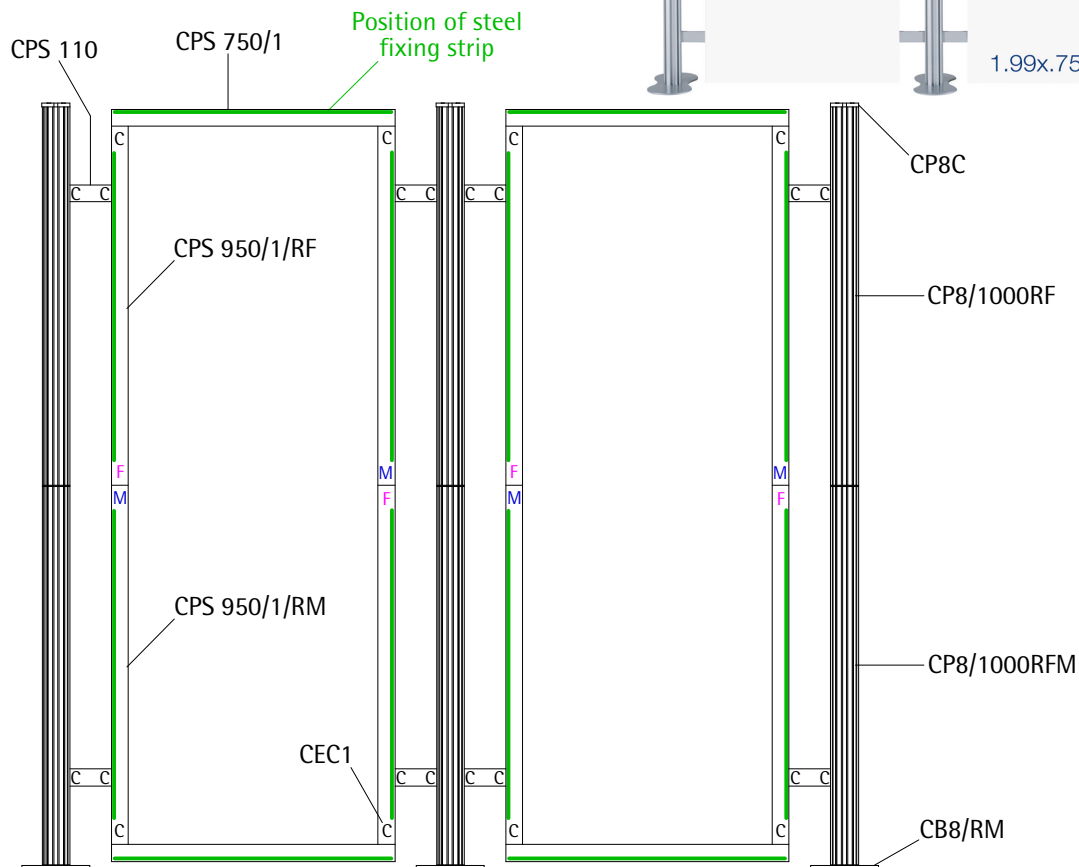


Graphic specification:

- Magnetic graphic panels = 2 @ 750mmW x 1990mmH each (finished print/cut size and visible graphic area)



Component reference code	Component description	Quantity
CB8/RM	Centro RotrLink base plate with male fitting	3
CP8/1000RFM	Centro RotrLink 8-way post - 1000mm with female and male connectors	3
CP8/1000RF	Centro RotrLink 8-way post - 1000mm with female connector	3
CP8C	Acrylic post end cap	3
CPS 750/1	Straight profile - 750mm (single steel strip)	4
CPS 950/1/RF	Straight profile - 950mm with female connector (single steel strip)	4
CPS 950/1/RM	Straight profile - 950mm with male connector (single steel strip)	4
CPS 110	Straight spacer bar profile - 110mm	8
CEC1	Expanding clamp	24
CTH4	T-handle 4mm hex key	1
CMT12	Magnetic tape type A (12m roll)	1
CTC1	Moulded wheeled trolley case with graphics tube	2

KIT REFERENCE:

C3RKS/150

DRAWN BY:

D. Whyatt

DESCRIPTION:

Centro 3 RotrLink Straight 1500 display kit - for magnetic graphic panels

DATE:

02/06/2014

SCALE:

1:20