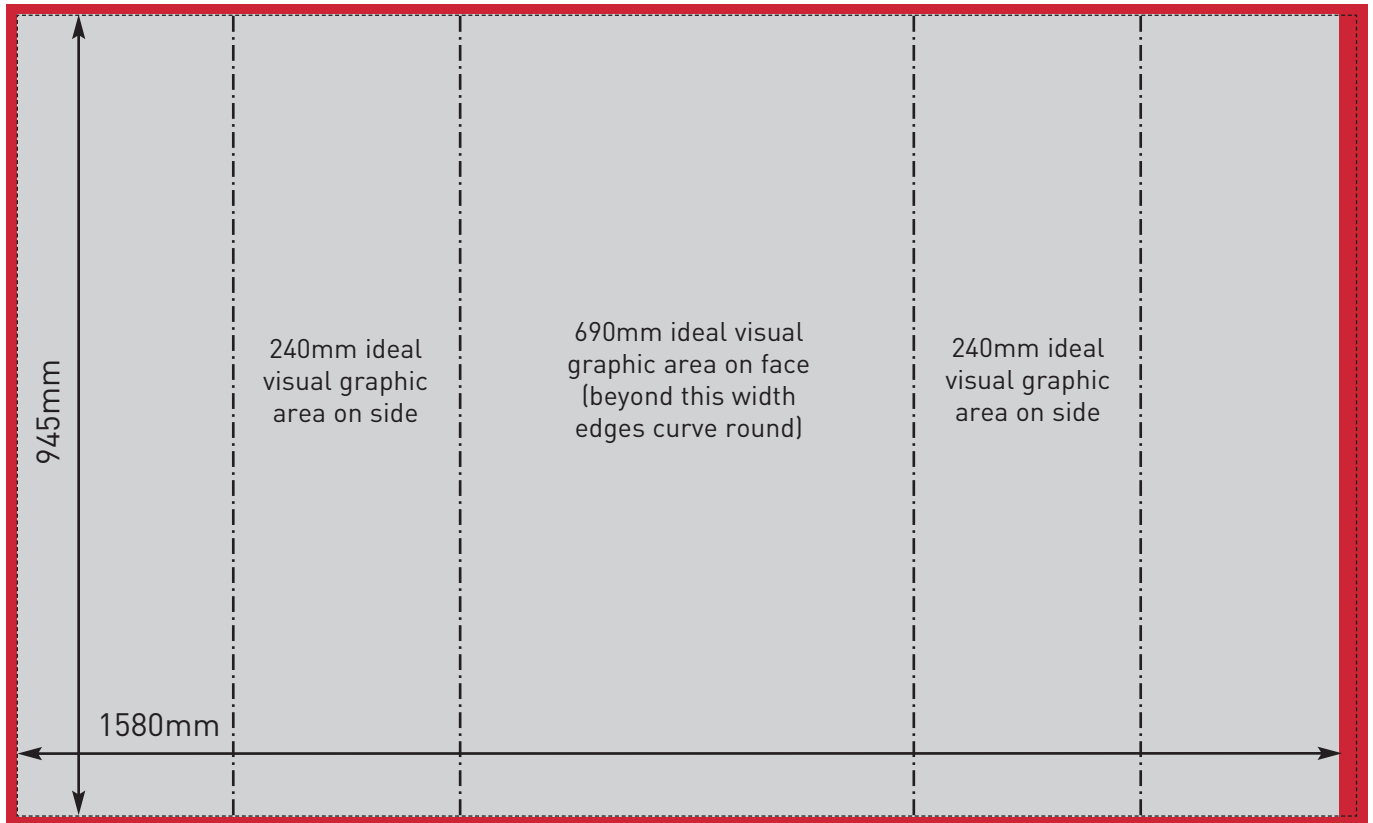


# CENTRO wheeled trolley case - graphic wrap specification

945mm x 1580mm

TOP



BOTTOM

- Visible Graphic Area  
945mmH x 1580mmW
- Finished Print Size  
945mmH x 1600mmW  
(including 20mm overlap on right)
- Image Bleed Area  
955mmH x 1610mmW  
(5mm to vertical and horizontal  
edges of the design plus an extra  
20mm on the right for overlap)

