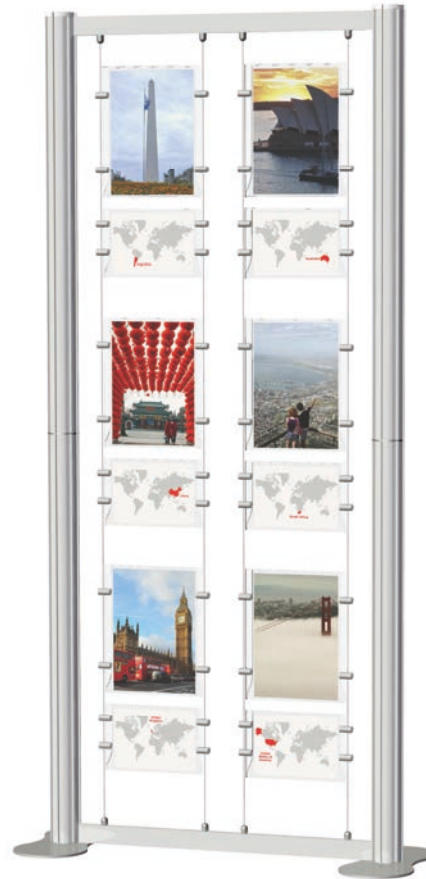


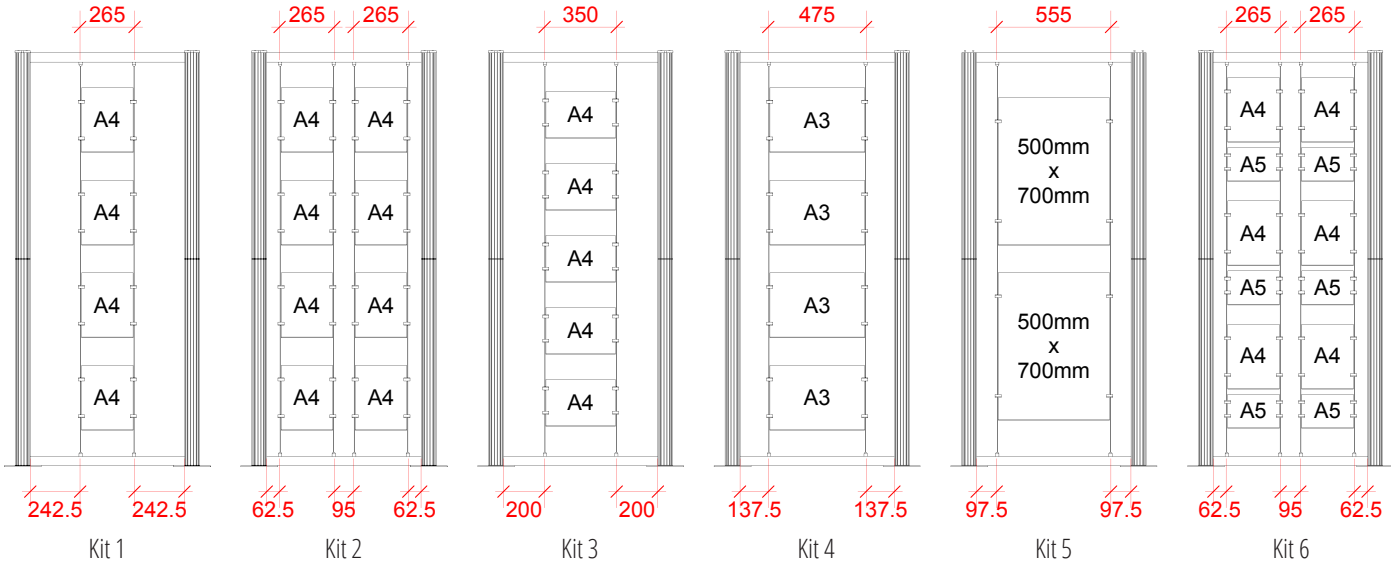
Centro Suspended Poster Display Kits 1 to 6

Assembly Instructions

Centro  Now with
T-Loc Connections



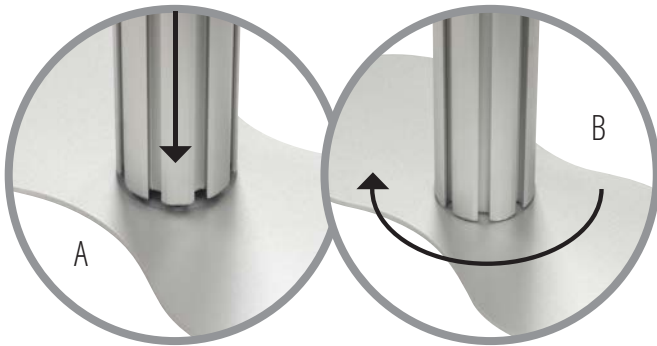
Cables need to be positioned to the dimensions below depending on which kit you have purchased.



1

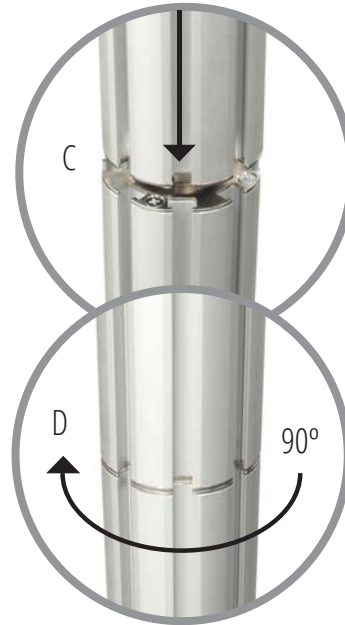


Place base plate on the floor, position lower post centrally over male fitting of base plate (A), and rotate until assembly drops into position, continue rotating clockwise through 90° to secure (B).



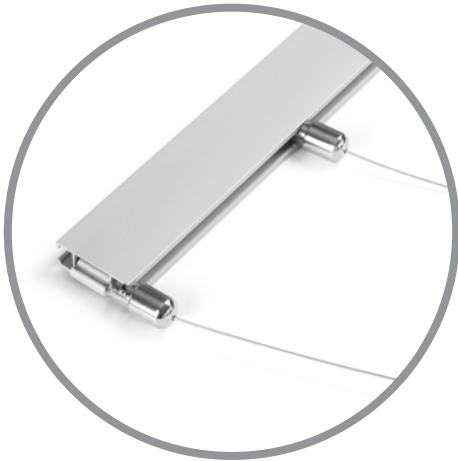
2

Affix upper post to lower post by positioning female end centrally over male fitting (C), and rotate until assembly drops into position, continue rotating clockwise through 90° to secure (D).



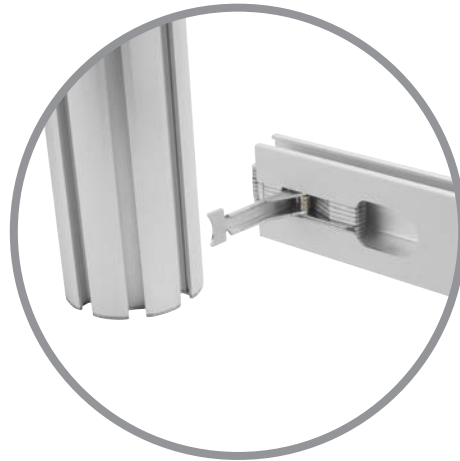
3

Slide fixing slots at one end of each of the cables into channel of profile.



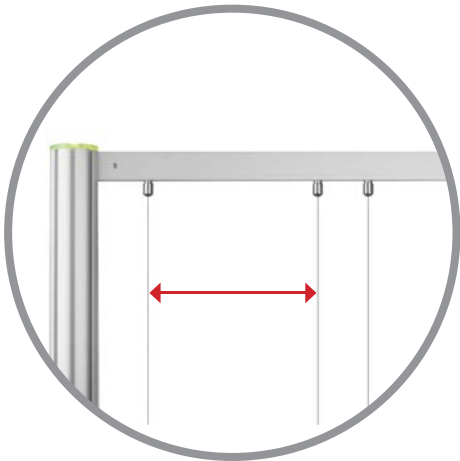
4

Firmly holding the middle of the horizontal rail with cables, raise to top of display. Slot clamp at one end of profile into post channel and close T-Loc lever to secure. Repeat for opposite end.



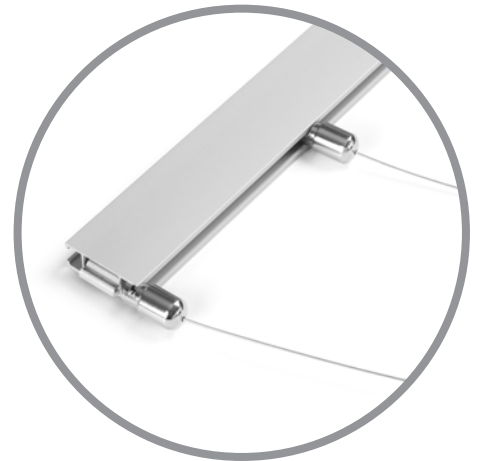
5

Position the cables centrally along profile allowing sufficient spacing inside each pair of cables you wish to display acrylic poster holders between. Please refer to page 2 for dimensions.



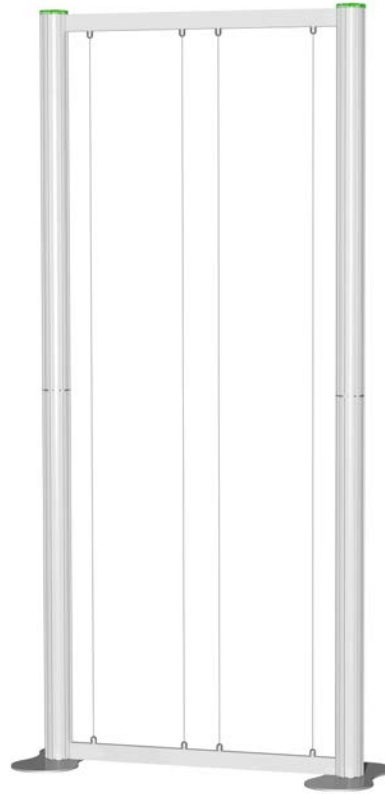
6

Slide slots at opposite end of each of the cables into channel of remaining profile, ensuring they are parallel to those at the top.



7

Tension cables by pulling bottom horizontal downwards and secure to both posts by closing T-Loc lever.

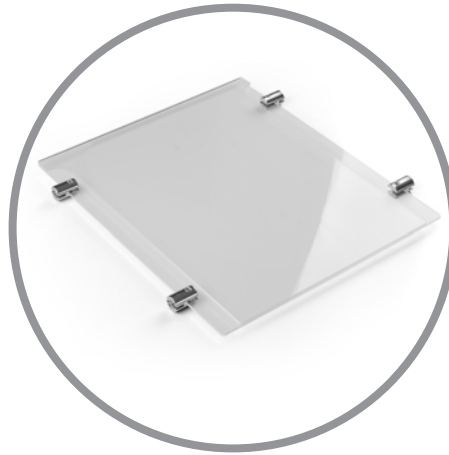


8

Attach 4x chrome connectors to each poster holder by sliding onto edge of acrylic and gently tightening.

WARNING – overtightening grub screws will damage poster holders.

Remove outer grub screw from chrome connectors.



9

Slide open ends of chrome connectors over cables and raise to desired display height. Re-insert grub screws and gently tighten to secure poster holders in position. Repeat for remaining poster holders to complete assembly.

