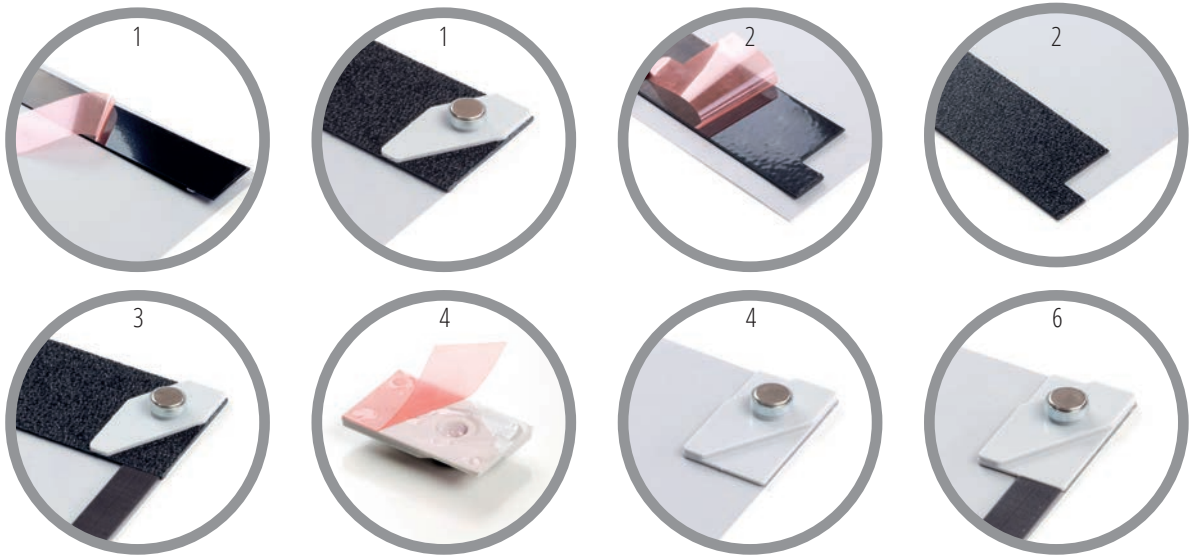


Pop Up System Magnetic Graphic Hanging Kit - Instructions (Post Spring 2014)

Please remove all packaging, checking all components are present and read instructions carefully before assembling.

Note: The new graphic rail design now includes a fully captive floating magnet



1. Position and centre the header rail on the back of the graphic, ensuring the large triangular recess of the hanging rail faces down the back of the graphic. Peel back the protective adhesive film and affix to the rear edges at the top of the graphic panel.
2. Repeat procedure for the bottom kicker rail.
3. Position magnetic tape 1mm from panel edge - affix and cut to desired length.
4. For end curve graphic, position the small end curve hanging pieces on the back of the graphic. Ensure the large triangular recess faces down the back of the graphic. Peel back the protective adhesive film and affix in position.
5. Repeat for opposite side.
6. Repeat procedure 3 (affixing magnetic tape) for end curve panels.
7. The graphic panel drops are now ready for hanging onto the pop-up system.

