

iPad Duo

Assembly Instructions



iPad Duo

1



WARNING – large base plate is heavy (7.5kg).

Carefully position base plate over 8-way post and align 4 off fixing holes to threads of post (ensuring the countersunk holes are uppermost). Insert and tighten 4 off base plate screws to secure.

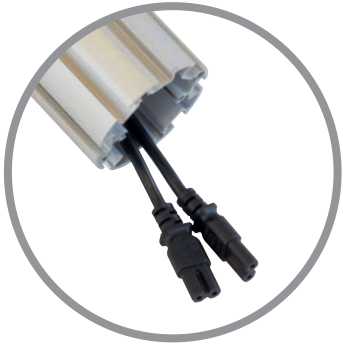
2



Carefully lay assembled base and post horizontally on floor.

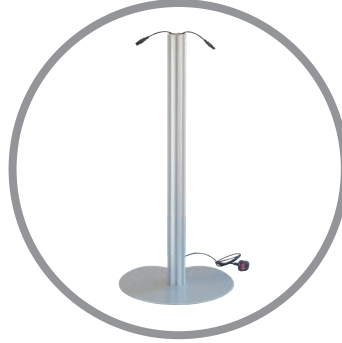
NB – If you are **not using cable management** for charging, please carefully stand base and post upright and **proceed to stage 6.**

3



Feed figure 8 heads of "Y" power lead through base until they protrude from top of post.

4



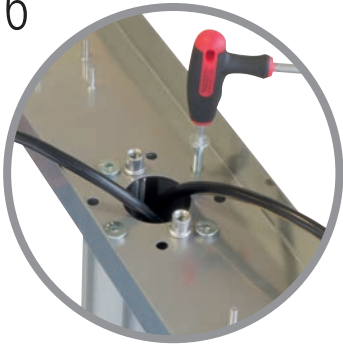
Stand base and post upright ensuring lead is kept clear of foot pads.

5



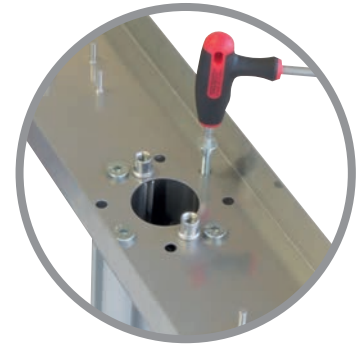
Feed figure 8 heads of power lead through central hole of bottom support plate and carefully place plate onto post. Align 4 holes to threads inside post at desired display angle.

6



Insert and tighten 4 off base plate screws to secure.

NB – If you are **not using cable management** for charging, please carefully place bottom support plate onto post. Align 4 holes to threads inside post at desired display angle. Insert and tighten 4 off base plate screws to secure and **proceed to stage 12.**



7



Plug one figure 8 head into a USB Power Adapter (supplied with Apple iPad) and position into retaining pins. Repeat for remaining power lead and adapter.

8



Unlock each iPad enclosure by inserting key into security lock and rotate 'QUARTER TURN ONLY' clockwise or counter-clockwise through 90 degrees, which releases the locking pin. Return key back to original position to remove.

9



Lift fascia out of enclosures. Insert cables (supplied with Apple iPad) into both holders, allowing 10cm to remain "free" at charge/sync connector end by gently pressing into retaining moulding.

10



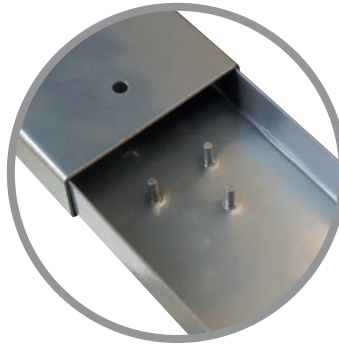
Feed USB end of charge/ sync cables through middle of enclosures, below pin, so they protrude from bottom of support columns.

11



Plug one cable into USB Power Adapter.

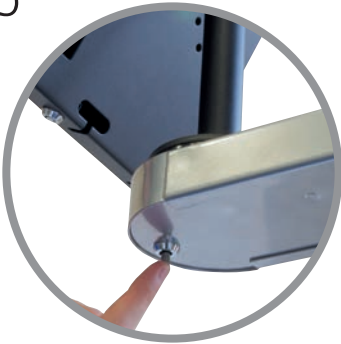
12



Carefully position and slide top support plate onto end of bottom support plate, ensuring the internal cables do not interfere with this assembly. Repeat stages 11 and 12 for remaining iPad holder.

NB – If you are **not using cable management** for charging, carefully position and slide top support plate onto end of bottom support plate. Repeat for remaining iPad holder.

13



Depress both lock buttons on underside of bottom support plate and insert and tighten remaining two hex socket screws to secure plates.

14



Plug charge/sync cable into one iPad and place inside enclosure, gently press all four corners of iPad down into mouldings to hold. Repeat for remaining iPad.

NB – If you are **not using cable management** for charging, unlock each iPad enclosure by inserting key into security lock and rotate 'QUARTER TURN ONLY' clockwise or counterclockwise through 90 degrees which releases the locking pin. Return key back to original position to remove. Lift fascia out of enclosures, and place each iPad inside, gently pressing all four corners down into mouldings to hold.



15



Replace both fascias and depress lock buttons to secure enclosures.