

iPad Displays (freestanding)

Assembly Instructions for Column, Versa 1 and Versa 2



iPad Displays (freestanding)

1



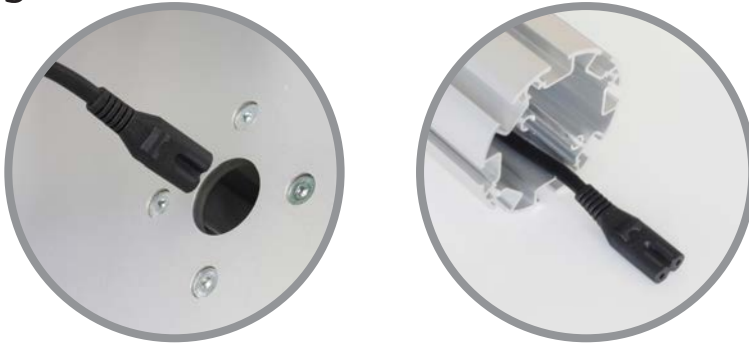
WARNING – large base plate is heavy (7.5kg). Position base plate over 8-way post and align 4 off fixing holes to threads of post (ensuring the countersunk holes are uppermost). Insert and tighten 4 off base plate screws to secure.

2



Carefully lay assembled base and post horizontally on floor. If required, assemble additional support at top of 1m post. If you are not using cable management for charging, please carefully stand base and post upright and proceed to stage 11.

3



Feed figure-8 head of power lead through base until it protrudes from top of post.

4



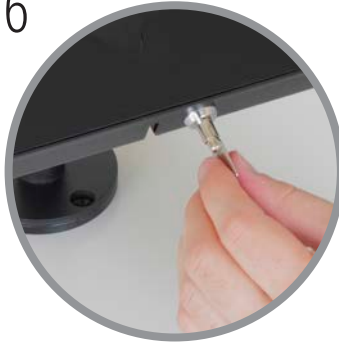
Stand base and post upright, ensuring lead is kept clear of foot pads.

5



Plug figure-8 head into USB Power Adapter (supplied with Apple iPad).

6



Unlock the iPad enclosure by inserting key into security lock and rotate 'QUARTER TURN ONLY' clockwise or counter-clockwise through 90 degrees which releases the locking pin. Return key back to original position to remove.

7



Lift fascia out of enclosure. Gently press cable (supplied with Apple iPad) into retaining moulding, allowing 10cm to remain "free" at charge/sync connector end.

8



Feed USB end of charge/sync cable through middle of enclosure, below pin, so it protrudes from bottom of support column.

9



Plug cable into USB Power Adapter.

10



Position black mains cable into internal post channel, and carefully slide USB Power Adapter inside post so the USB head of charge/sync cable is below upper edge of post.

11



Align first 2 holes of the iPad holder to the threads of the post. Insert and tighten screws to secure. Rotate iPad holder through 90°, aligning remaining 2 holes to threads of post. Insert and tighten screws to secure.

12



Plug charge/sync cable into iPad and place inside enclosure, gently press all four corners of iPad down into mouldings to hold.



NB – If you are not using cable management for charging, unlock the iPad enclosure by inserting key into security lock and rotate 'QUARTER TURN ONLY' clockwise or counter-clockwise through 90 degrees which releases the locking pin. Return key back to original position to remove. Lift fascia out of enclosure, and place iPad inside, gently pressing all four corners down into mouldings to hold.

13



Replace fascia and depress lock button to secure enclosure.

14



iPad Versa 1 and 2

Assemble additional components and accessories as required.

15



iPad Versa 1 and 2

Slot clamps of assembled profile into post channels and tighten grub screws with hex key supplied to secure.

16



iPad Versa 1 only

Arc and slot rigid panel into innermost channels of posts, and lower into channel of horizontal profile assembly.

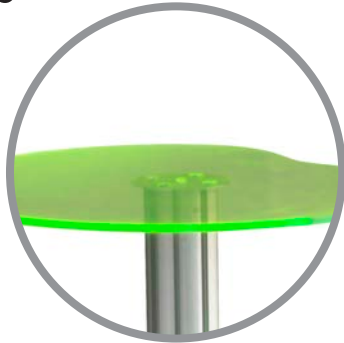
17



iPad Versa 1 only

Slot second horizontal assembly onto top of rigid panel and into channel of post. Tighten remaining grub screws to complete assembly of the display.

18



iPad Versa 1 and 2



iPad Versa 1 and 2

Assemble additional components and accessories as required.

